

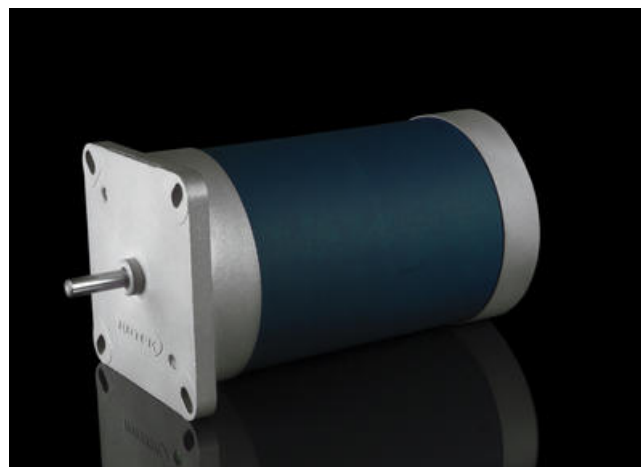


ROTEK - ROSLYDE AC MOTOR

ROSLYDE 44.0

1~24Vac, 50/60Hz, 1500/1800rpm, 7.0/6.0Ncm

- 1→3 phase, 24V→400Vac, 50/60Hz, 11→40W, 6→26Ncm, 1500→1800rpm
- 65mm Ø
- Constant speed
- Short start-up and stopping times
- Low-vibration, low-noise & low running temperature



PRODUCT DESCRIPTION

COMPACT MOTORS FOR DEMANDING APPLICATIONS

ROSLYDE - Low-vibration and low-noise

When smooth running is the prime concern, our ROSLYDE motors are the ideal solution.

Their low-vibration, low-noise running is down to our SmoothDrive Technology.

This makes them the motor of choice for laboratory and domestic applications such as wood-burning stoves and rotary heat exchangers.

However, the self-holding torque typical of synchronous motors is reduced to a minimum.

TECHNICAL DATA

Capacitor	60 µF
Current	710/670 mA
Diameter	65 mm
Frequency	50/60 Hz
Input	17/16 VA
Insulation class	F 155°C
IP class	IP40, IP55
Output	11 W
Rated torque	7/6 Ncm
Shaft diameter	5 mm
Speed	1500/1800 rpm
Supply voltage options	24 V AC

PLANETARY GEARS

max. 3 - 50 Nm
i = 4:1 - 500:1
output shaft 8 - 14 mm
for motors up to 100 W



→ more

SPUR GEARS

max. 6 - 12 Nm
i = 5:1 - 133:1
output shaft 8 - 12 mm
for motors up to 30 W



→ more

WORM GEARS

max. 5 - 12 Nm
i = 20:1 - 100:1
axis spacing 31 mm
for motors up to 50 W



→ more

FLAT GEARS

max. 10 - 27 Nm
i = 50:1 - 158:1
output shaft 8 - 15 mm
for motors 20 - 50 W



→ more

ONE TECHNOLOGY
BOUNDLESS POSSIBILITIES



SPUR GEAR

planetary shaft
output shaft

PLANETARY

low noise gearbox
planetary shaft
planetary shaft
planetary shaft

WORM

output shaft
planetary shaft
planetary shaft
planetary shaft

ELECTRIC

output shaft
planetary shaft
planetary shaft
planetary shaft

HYDRAULIC

output shaft
planetary shaft
planetary shaft
planetary shaft